



BOISE PUBLIC LIBRARY

MAYOR: Lauren McLean | DIRECTOR: Jessica Dorr

BOISE PUBLIC LIBRARY BOARD OF TRUSTEES

Joint Meeting Minutes
February 24, 2026

The Boise Public Library Board of Trustees met at Boise City Hall in the Maryanne Jordan City Council Chambers for a joint meeting with Boise City Council at 10:00 a.m. on Tuesday, February 24, 2026

City Staff and Partners Present

Jessica Dorr, Library Director
Lauren McLean, Mayor of Boise
Courtney Washburn, Chief of Staff
Kari Davis, Library Administrative Manager
Megan McIntosh, Library Administrative Specialist
Ed Jewell, Boise City Legal Counsel
Lindsay Erb, Public Works Senior Project Manager
Maureen Brewer, Planning and Development Services Director
Deanna Dupuy, Comprehensive Planning and Policy Planning Manager

1. Call to Order and Opening Remarks

The meeting was called to order at 10:00 a.m., and a roll call was conducted.

City Council Present: Meredith Stead, President; Kathy Corless, Pro Tem; Jimmy Hallyburton; Jordan Morales; Colin Nash; Luci Willits.

Library Board of Trustees Present: Ron Pisaneschi, President; Nicole Trammel Pantera, Vice President; Brian Klene.

Absent: Evelyn Johnson; Reshma Kamal.

2. Boise Library Director Recommendations, Library Facilities Plan

Dorr, the Library Board, and City Council discussed the work done on the Library Facilities Plan following the October Joint Meeting. The discussion focused on confirming direction following the October Joint Meeting; the Library's need for additional space and consider strategies in response; input for the April discussion; and how to connect the Library to related city planning efforts. Council discussed the draft service goals; community awareness; and public feedback on programs and facilities. Dorr shared the changes in site selection criteria comparing the 2000 Master Plan and Group 4 Recommendations. Council requested more information on site size criteria with parking included. Regarding Council's role, Mayor McLean explained that the Library Board is

DOWNTOWN LIBRARY
715 S. Capitol Blvd., Boise, Idaho 83702
P: 208-972-8200 | TTY: 711

LIBRARY! AT
BOWN CROSSING
P: 208-972-8360

LIBRARY! AT
COLE AND USTICK
P: 208-972-8300

LIBRARY! AT
COLLISTER
P: 208-972-8320

LIBRARY! AT
HILLCREST
P: 208-972-8340

BOISE CITY COUNCIL: Meredith Stead (President), Kathy Corless (President Pro Tem), Jimmy Hallyburton, Jordan Morales, Colin Nash, Luci Willits

BOISEPUBLICLIBRARY.ORG

more independent than other boards within the city and Council's role is focused on budget and policy authority.

Dorr's recommendations include keeping the current three-mile proximity goal; adding a target for increased square footage per person; and engaging in city planning discussions to identify expansion opportunities tied to growth. Investing in the current facilities will ensure the Library is able to continue to meet the expectations of the growing community. With anticipated increased density, focusing on additional square footage allows for increased impact in a cost-effective and responsible way.

3. Overview of City Planning Efforts

Mayor McLean noted that Planning and Development Services staff will be brought back in June for the capital planning meeting. Council inquired about the potential population growth in Southeast Boise. Dupuy clarified that in the East Columbia area, the city has planned for 8,000 housing units.

4. Continued Discussion and Next Steps

Council discussed square foot per capita versus a proximity goal for the Library Facilities Plan. It was noted there are other potential metrics to be evaluated with each district having different needs and desires for capital planning. Trustees highlighted that with additional staff there are more opportunities for outreach, offsite services, programs, and partnerships in underserved areas. Council requested additional information on current M&O needs; what growth in current facilities is needed; what new facilities would be needed to meet a potential two-mile library proximity goal; and opportunities for innovative services to increase reach for the April work session.

5. Adjournment

MOTION to adjourn the meeting.

Motion: Pantera

Second: Klene

Result: Motion carried.

The meeting ended at 12:04 p.m.

Approved

Jessica Dorr, Director

Ron Pisaneschi, President





Library!



BOISE PUBLIC LIBRARY

Joint Meeting City Council and Library Board of Trustees | February 24, 2026



MISSION

The mission of the Boise Public Library is to provide access and opportunity for everyone by connecting people to ideas, information, and community.



FACILITIES PLANNING

- A Facilities Plan will help us ensure that our Libraries are:
 - Welcoming
 - Accessible
 - Attractive
 - Comfortable spaces for the entire community
- The plan will recommend how to improve the Library's buildings over the next 10-20 years.

OCTOBER 2025 RECOMMENDATIONS

Invest in Current Facilities

- Schedule and fund replacement cycles for major repair and maintenance at all current locations
- Continue to participate in the Lynx Library Consortium
- Renew leases at Collister and Hillcrest

Explore Innovation and Partnerships

- Look for opportunities to provide specialized services at suitable locations
- Consider non-staffed models of access to materials
- Explore partnerships for expanded programs and services with Lynx Library partners

Increase Library Space

- Budget to secure, equip, and staff additional Library space
- Look for opportunities to collocate Library services with other City services
- Meet community expectations of Proposition 1 passed in 2019

NEXT STEPS

December 16, 2025: Council Work Session:
Downtown Library

February 24, 2026: Joint Work Session: Library Site
Location Criteria and Service Goals

Council Work Session: Options to expand access
and meet updated Service Goals (April 28, 2026)

Joint Work Session: Capital Plan (June 16, 2026)

GOALS FOR TODAY'S DISCUSSION

- Confirm direction following the October Joint Meeting in areas identified for discussion:
 - Library Service Goals
 - Library Site Selection Criteria
- Discuss the Library's need for additional space and consider strategies in response
 - Library proximity goal
 - Square feet per capita goal
- Provide input for April discussion about options to meet Library goals
- Discuss how to connect the Library to related city planning efforts

SERVICE GOALS

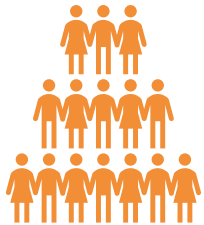


LIBRARY STRATEGIC PRIORITIES



EXPAND ACCESS

Make our collections, programs, and services available when, where, and how people want them.



INCREASE IMPACT

Create valuable experience for every resident and meet their needs at every stage of life.



OPTIMIZE RESOURCES

Modernize, strengthen, and streamline our operational capabilities.



MEASURE VALUE

Establish impact and performance metrics and use data for decision making.

Strategic Priorities	Strategic Goals	Draft Service Goals
<p>Expand Access: Make our collections, programs, and services available, when, where, and how people want them.</p>	<p>Ensure that every community member has access to library materials in a format that works for them.</p>	<p>On average, each Boise cardholder checks out [x] items annually.</p> <p>Average Boise cardholder saves [\$x] annually through use of the Library.</p>
	<p>Create library spaces that are accessible and welcoming to all.</p>	<p>Every facility is 100% compliant with the Americans with Disabilities Act.</p> <p>All Boise residents live within [x] miles of a Library.</p>
	<p>Increase the number of people who are aware of and benefit from the variety of services the Library provides</p>	<p>On average each resident of Boise visits/uses the Library [frequency].</p>
		<p>[X%] of Boise residents attend or participate in a Library program.</p>
		<p>[X%] of the residents of Boise have an active Library card.</p>
	<p>Increase Impact: Create valuable experiences for every resident and meet their needs at every stage of life.</p>	<p>Elevate literacy and lifelong learning for Boise residents.</p>
<p>Strengthen connections with community organizations.</p>		<p>Library partnerships lead to more than [x#] of connections to services.</p>
		<p>Boise job seekers and the business community receives more than [\$xm] in support annually.</p>

DISCUSSION

SITE SELECTION



COMPARING 2000 MASTER PLAN AND GROUP 4 RECOMMENDATIONS

What is similar:

- Accessibility
- Visibility
- Demographic Patterns
- Neighborhood Compatibility
- Legal Matters/Zoning
- Utilities Availability
- Physiography

What is different:

- Site size recommendations
 - 2000 Master Plan: 1.4 acres for single-story 15k square foot library
 - Group 4: 1.5 acres for single-story 25-30k square foot library (parking not included)
- Compatibility with city development plans
- Potential for high-value partnerships
- Requirements of Proposition 1

UPDATED CRITERIA

Access & Impact

Demographic
Reach & Service
Impact

Access &
Connectivity

Site Capacity & Functionality

Site Capacity &
Expandability

Site Conditions &
Buildability

Community Context & Experience

Visibility & Civic
Presence

Community Fit &
Neighborhood
Compatibility

Partnership & Co-
location Potential

Feasibility, Risk & Long-Term Value

Legal, Zoning &
Entitlement Risk

Climate,
Sustainability &
Resilience

DISCUSSION



OUR NEED FOR GROWTH



STRATEGIES FOR GROWTH

1997 Comprehensive
Plan
Proximity Goal

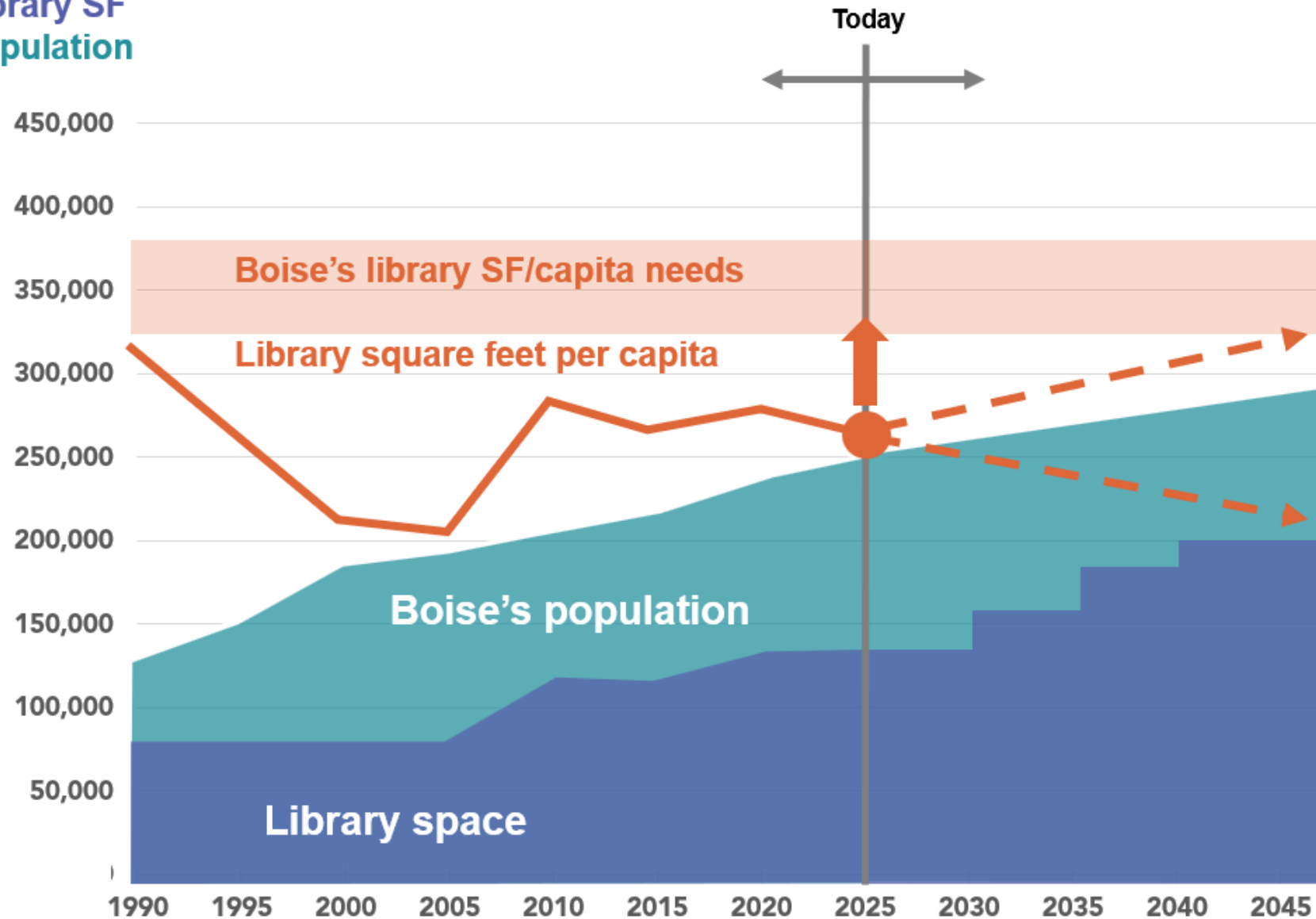
2000 Master Facility Plan
Branch Strategy

2026
Square Footage per
Capita
Recommendation

LIBRARY NEEDS WILL GROW



Library SF
Population

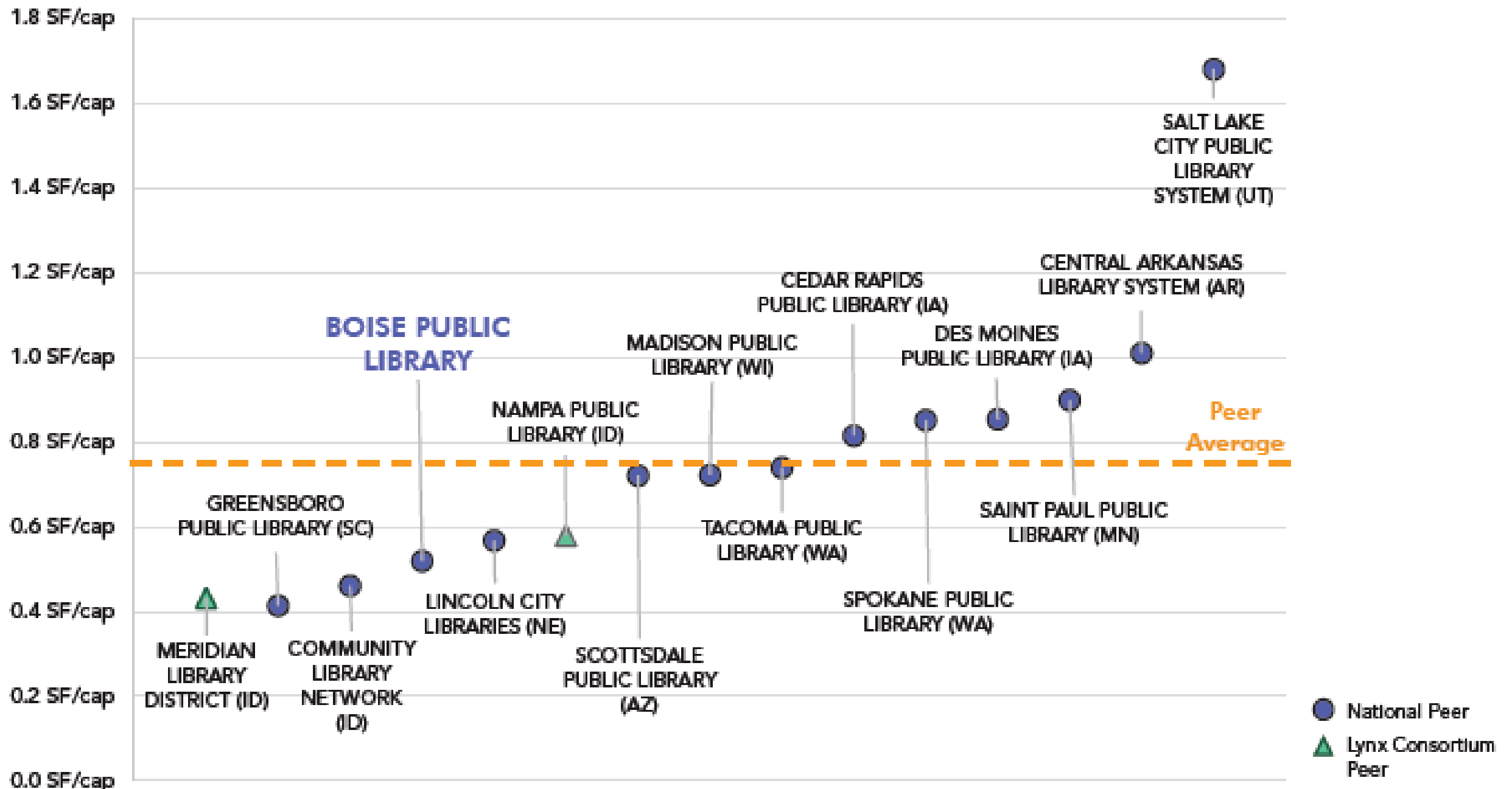


THE WIDENING GAP

- To adequately serve the current population of Boise, we need 20-30% more space
 - We currently have 0.52 square feet of space per capita
 - 30,000 to 40,000 additional square feet needed today
 - This would put us between 0.66 and 0.71 square feet per capita
- To serve the projected population of Boise of 280,000 in 2045, we need to increase space as the population grows

Location	Square Footage	Percentage
Bown Crossing	15,900	12%
Cole and Ustick	15,300	12%
Collister	12,200	9%
Downtown	79,400	61%
Hillcrest	8,400	6%
Total	131,200	100%

PEER LIBRARY SQUARE FEET PER CAPITA



WHY CONSIDER SQUARE FOOTAGE PER PERSON IN ADDITION TO PROXIMITY

- The 2000 Master Facilities Plan and Blueprint Boise's goal of a three-mile radius have resulted in well-located branches with comprehensive coverage
 - 87% of Boise within three miles of a Boise Public Library
 - 97% of Boise within three miles of Boise Public or Lynx Library
- It has also resulted in branches inadequately sized to meet the needs and expectations of our current and future users

GROWTH STRATEGIES

More branches

- Create neighborhoods service points
- Struggle to meet expectations of all users
- Easier to afford to build
- Less efficient to staff over time

Larger buildings

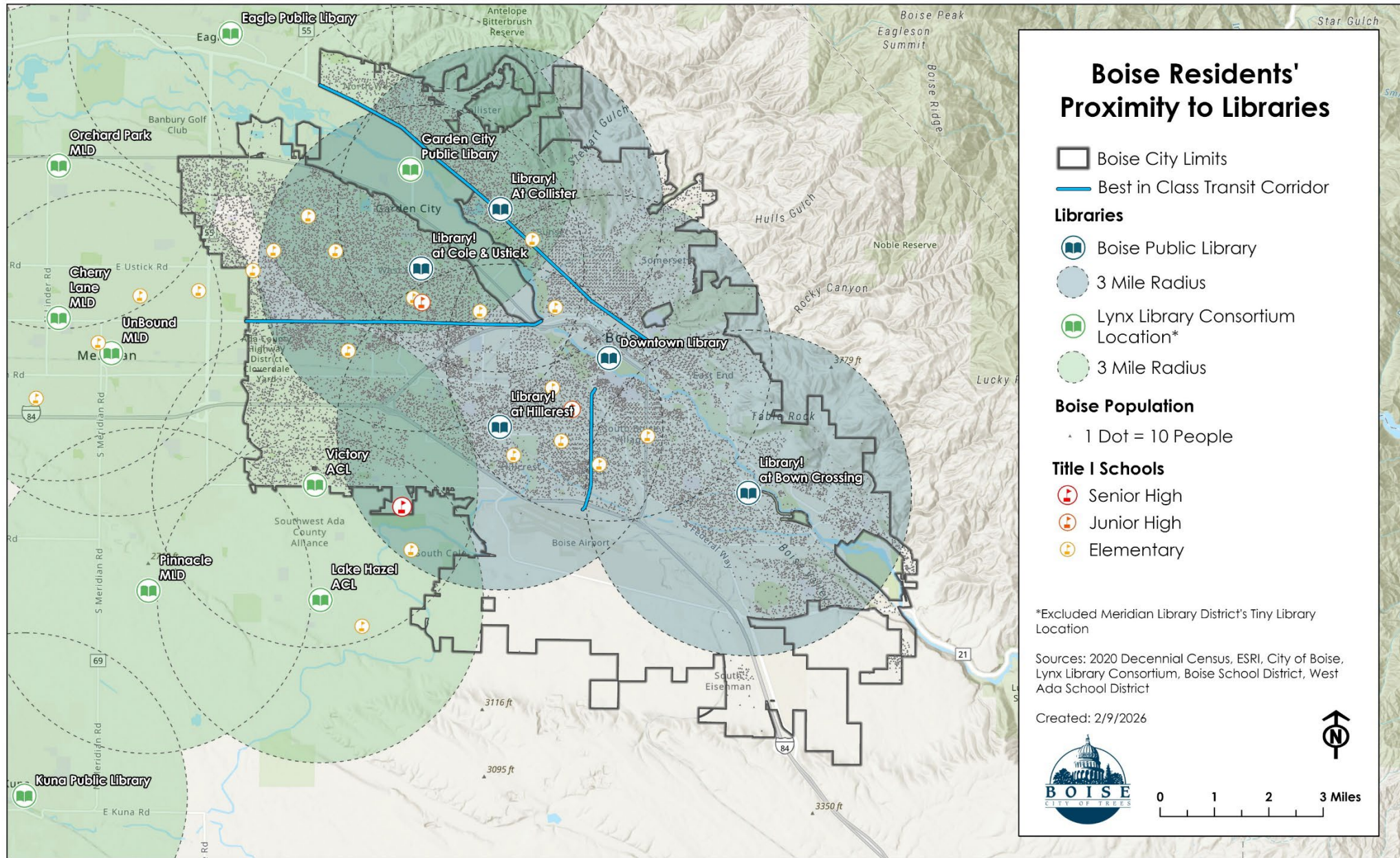
- Draw people across the city for programs and services
- Better equipped to meet community expectations of all users
- Harder to afford to build
- More efficient to staff

MY RECOMMENDATIONS

- Keep the current three-mile proximity goal as is
- Add a target for increased square footage per person across the system
 - Use the Library Site Selection Criteria to evaluate potential sites to add footage
- Continue to engage in city planning discussions to identify expansion opportunities tied to growth
 - Add updated Library site selection criteria to related plans

MAP VIEWS

- In previous discussions, the following views were requested:
 - Map with “Best in Class” Transit Corridor
 - Map with Title 1 schools identified
 - Library proximity views and assessment with drive time calculations
 - 5 minute
 - 10 minute
 - 15 minute
 - Library proximity views and assessment with a two-mile radius
 - Addition of a new branch in West Boise



Boise Residents' Proximity to Libraries

- Boise City Limits
- Best in Class Transit Corridor

Libraries

- Boise Public Library
- 3 Mile Radius
- Lynx Library Consortium Location*
- 3 Mile Radius

Boise Population

- 1 Dot = 10 People

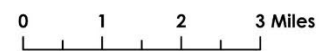
Title I Schools

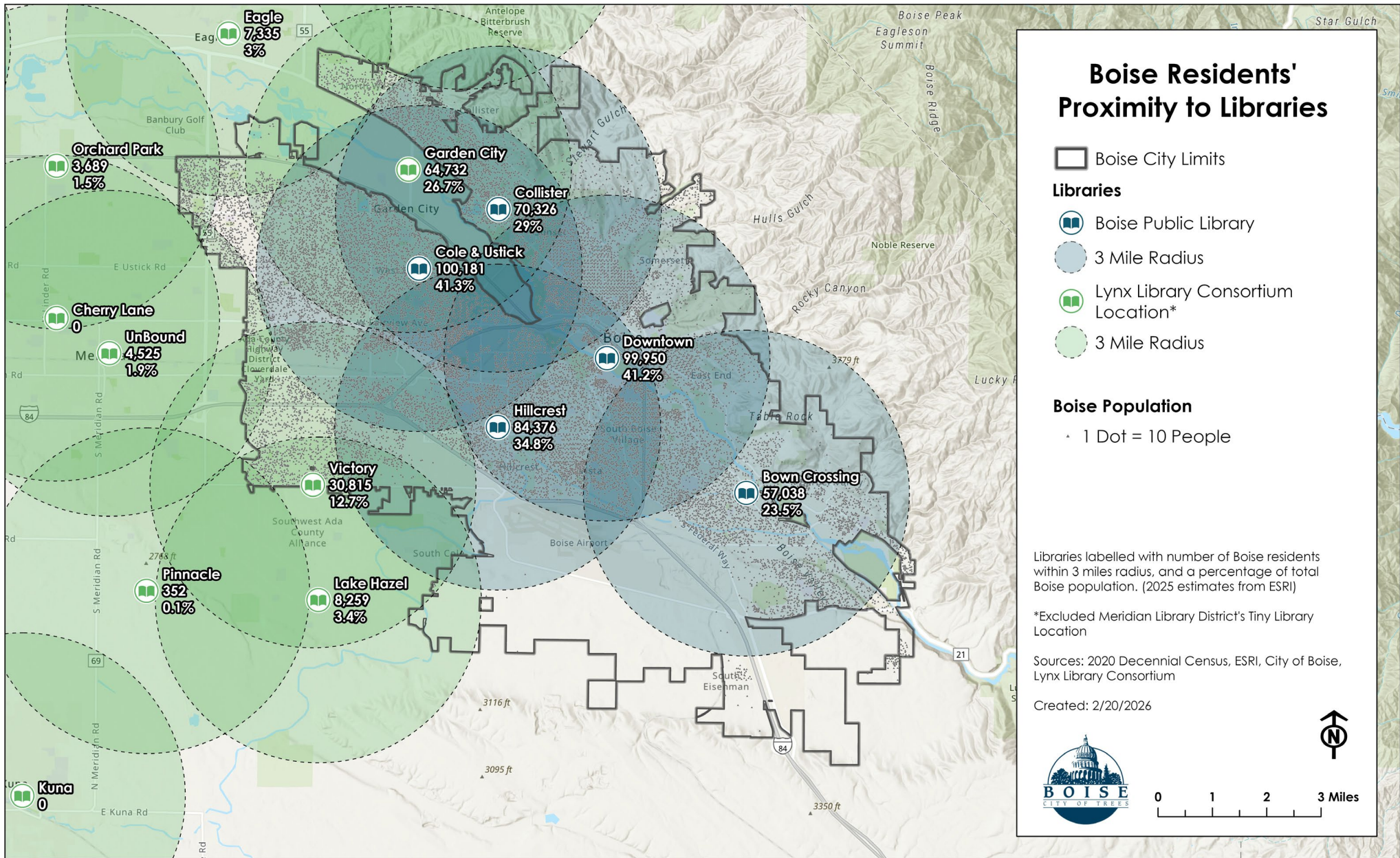
- Senior High
- Junior High
- Elementary

*Excluded Meridian Library District's Tiny Library Location

Sources: 2020 Decennial Census, ESRI, City of Boise, Lynx Library Consortium, Boise School District, West Ada School District

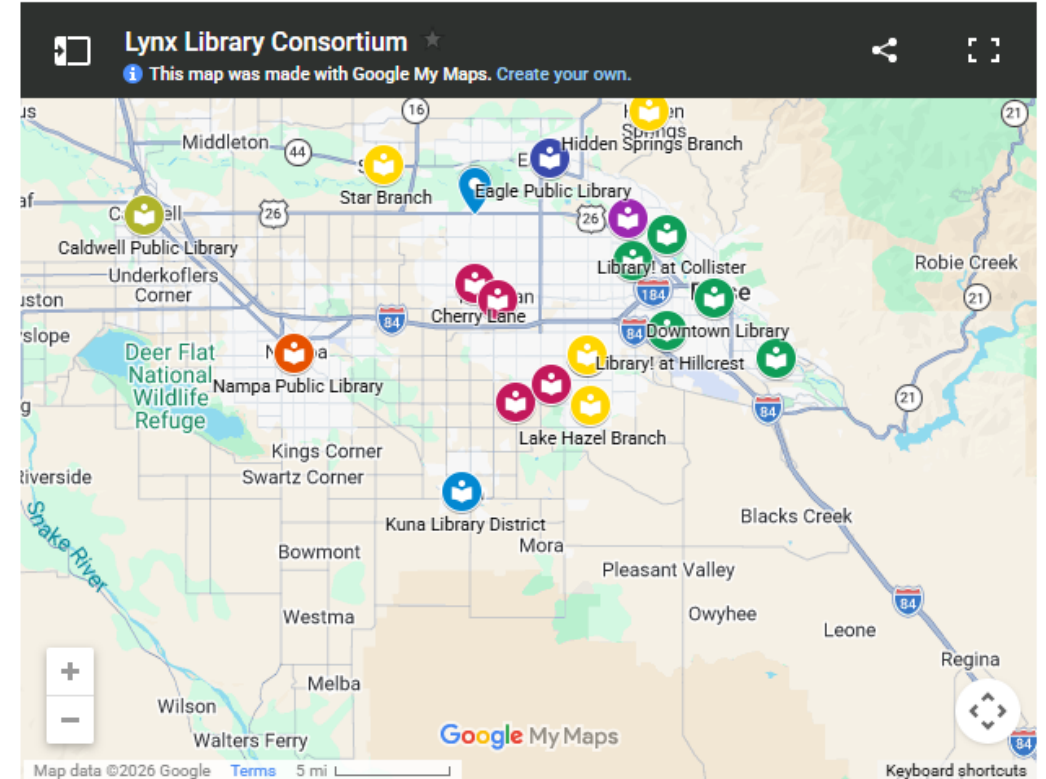
Created: 2/9/2026





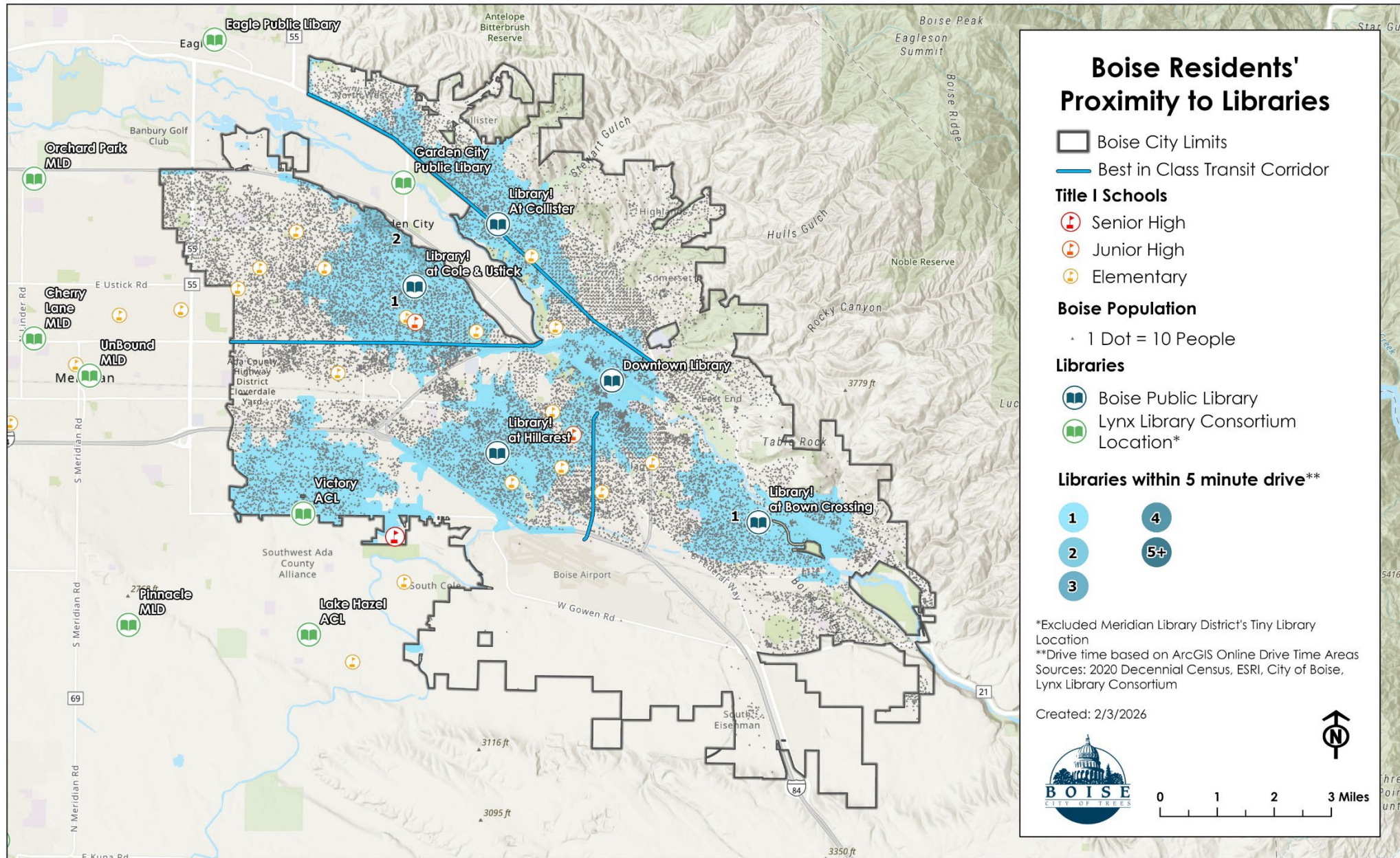
CONSORTIUM LIBRARIES

- Boise Public Library is part of the Lynx Library Consortium which share materials and systems in order to provide seamless Library service.
 - The cost share formula is calculated so that larger libraries pay a higher percentage of costs.
 - Boise's will pay \$331,000 for FY26 with a cost share of 43.54%
- Additionally, Boise annually pays Ada Community Library for tax revenue lost due to historical annexation (FY26 \$544,000) and Garden City (FY26 \$57,805) for excessive use.



DRIVE TIMES





Boise Residents' Proximity to Libraries

- Boise City Limits
- Best in Class Transit Corridor

Title I Schools

- Senior High
- Junior High
- Elementary

Boise Population

1 Dot = 10 People

Libraries

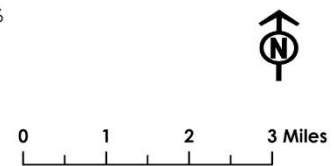
- Boise Public Library
- Lynx Library Consortium Location*

Libraries within 5 minute drive**

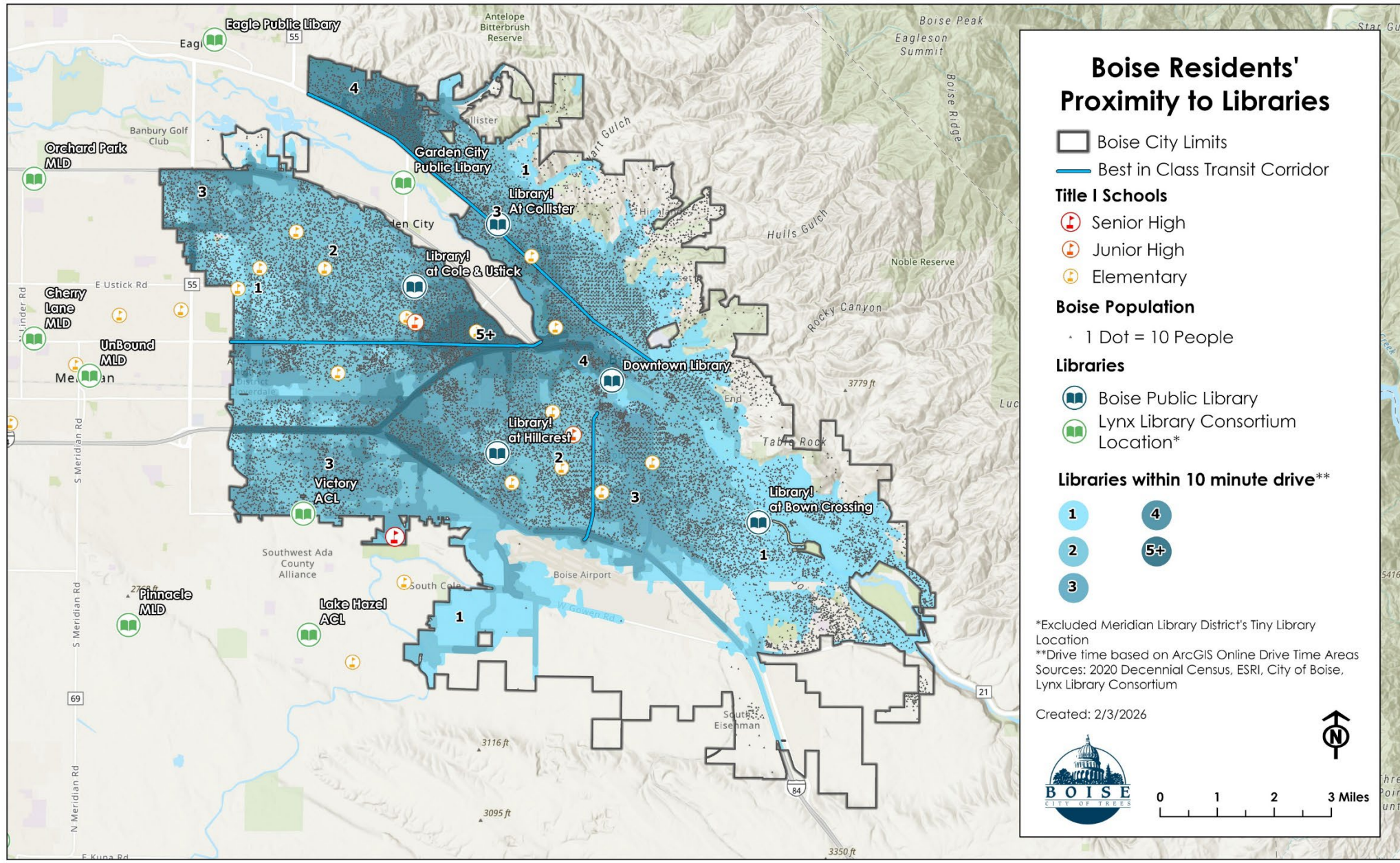
- 1
- 2
- 3
- 4
- 5+

*Excluded Meridian Library District's Tiny Library Location
 **Drive time based on ArcGIS Online Drive Time Areas
 Sources: 2020 Decennial Census, ESRI, City of Boise, Lynx Library Consortium

Created: 2/3/2026



Three Point Unit



Boise Residents' Proximity to Libraries

- Boise City Limits
- Best in Class Transit Corridor

Title I Schools

- Senior High
- Junior High
- Elementary

Boise Population

1 Dot = 10 People

Libraries

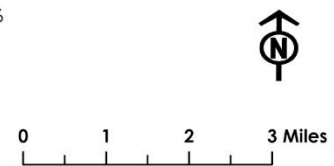
- Boise Public Library
- Lynx Library Consortium Location*

Libraries within 10 minute drive**

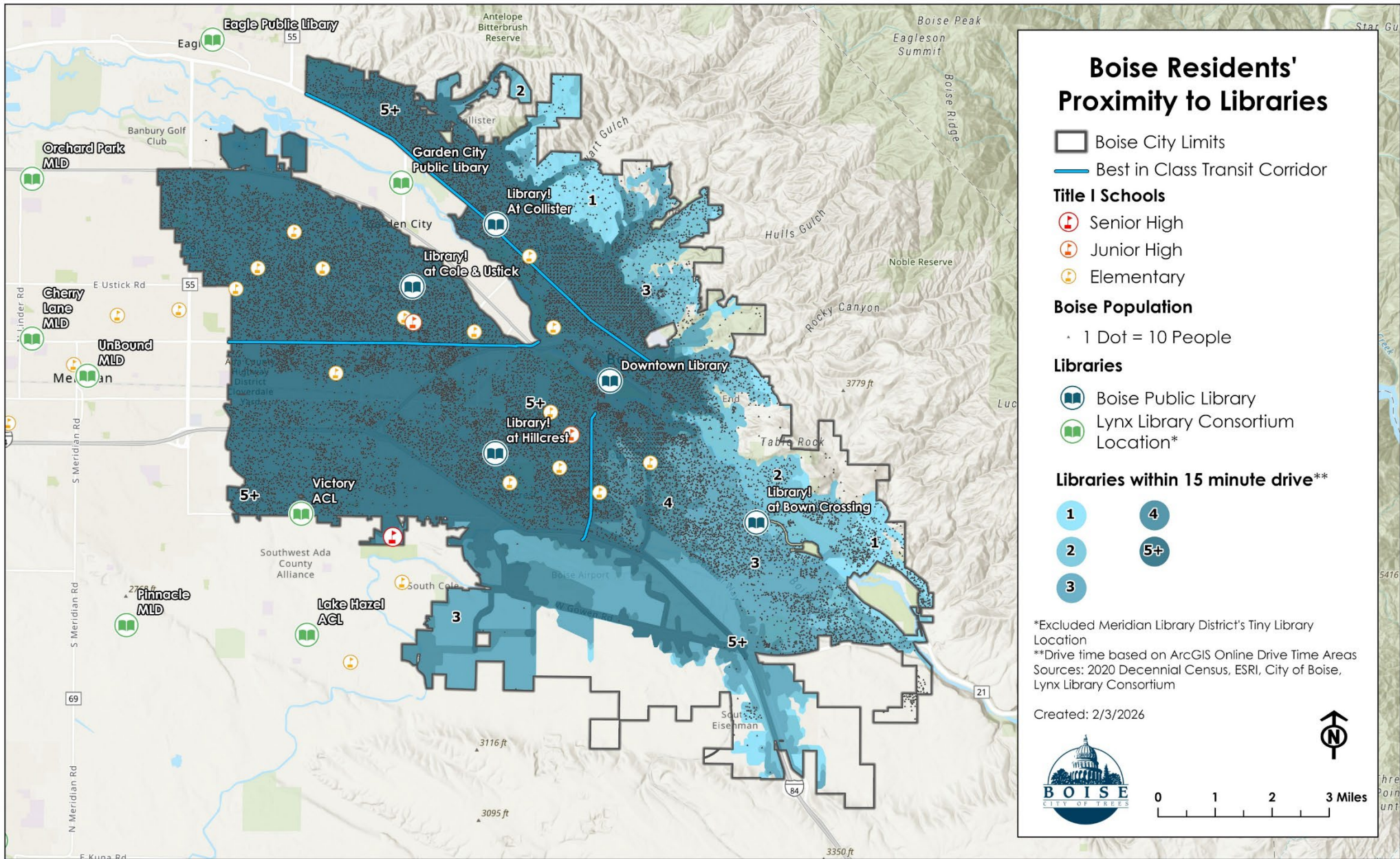
- 1
- 2
- 3
- 4
- 5+

*Excluded Meridian Library District's Tiny Library Location
 **Drive time based on ArcGIS Online Drive Time Areas
 Sources: 2020 Decennial Census, ESRI, City of Boise, Lynx Library Consortium

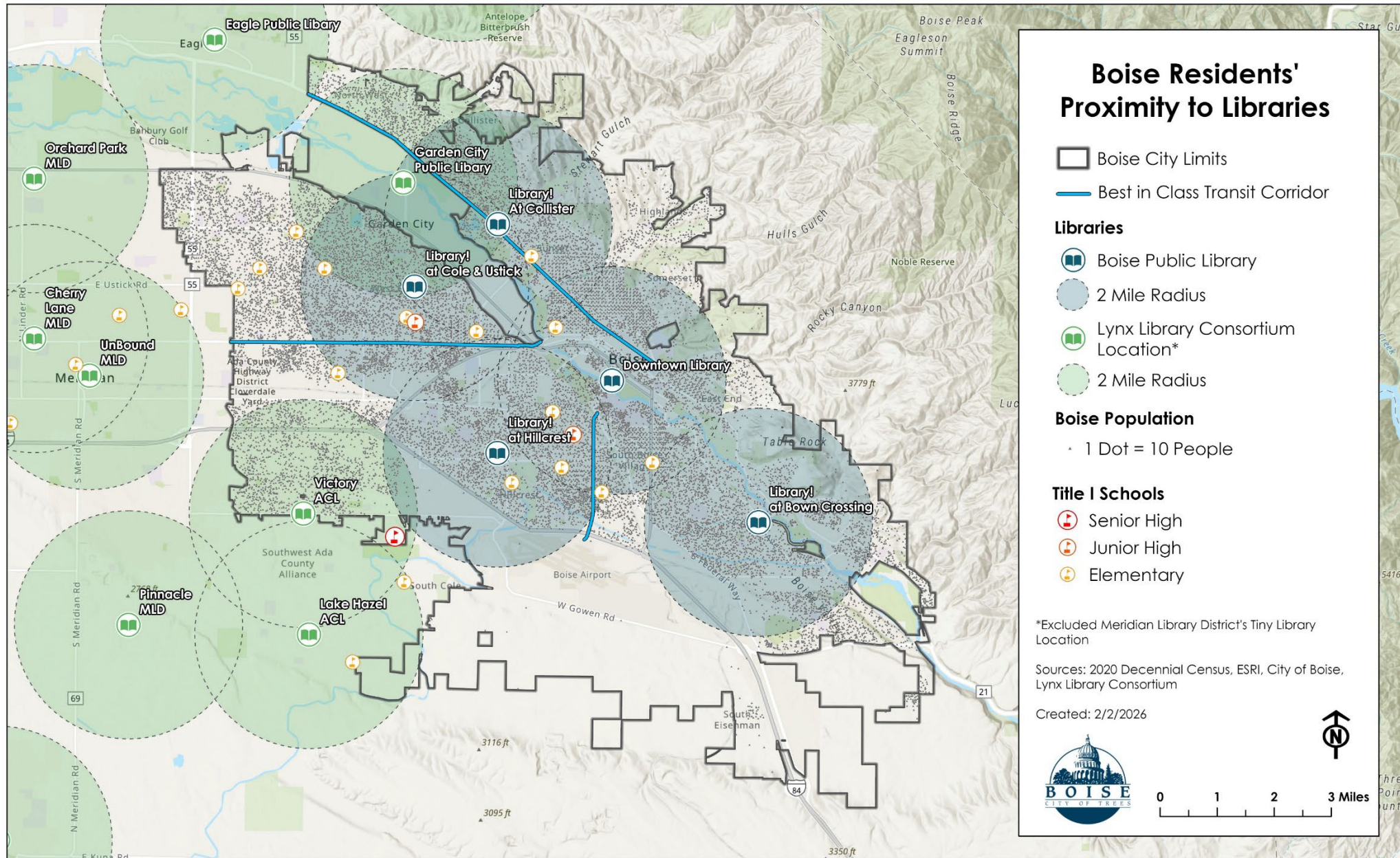
Created: 2/3/2026



Three Point Unit



PROXIMITY TWO-MILE RADIUS



Boise Residents' Proximity to Libraries

- Boise City Limits
- Best in Class Transit Corridor

- ### Libraries
- Boise Public Library
 - 2 Mile Radius
 - Lynx Library Consortium Location*
 - 2 Mile Radius

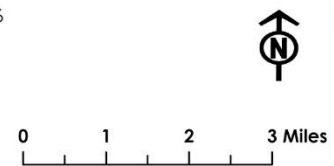
- ### Boise Population
- 1 Dot = 10 People

- ### Title I Schools
- Senior High
 - Junior High
 - Elementary

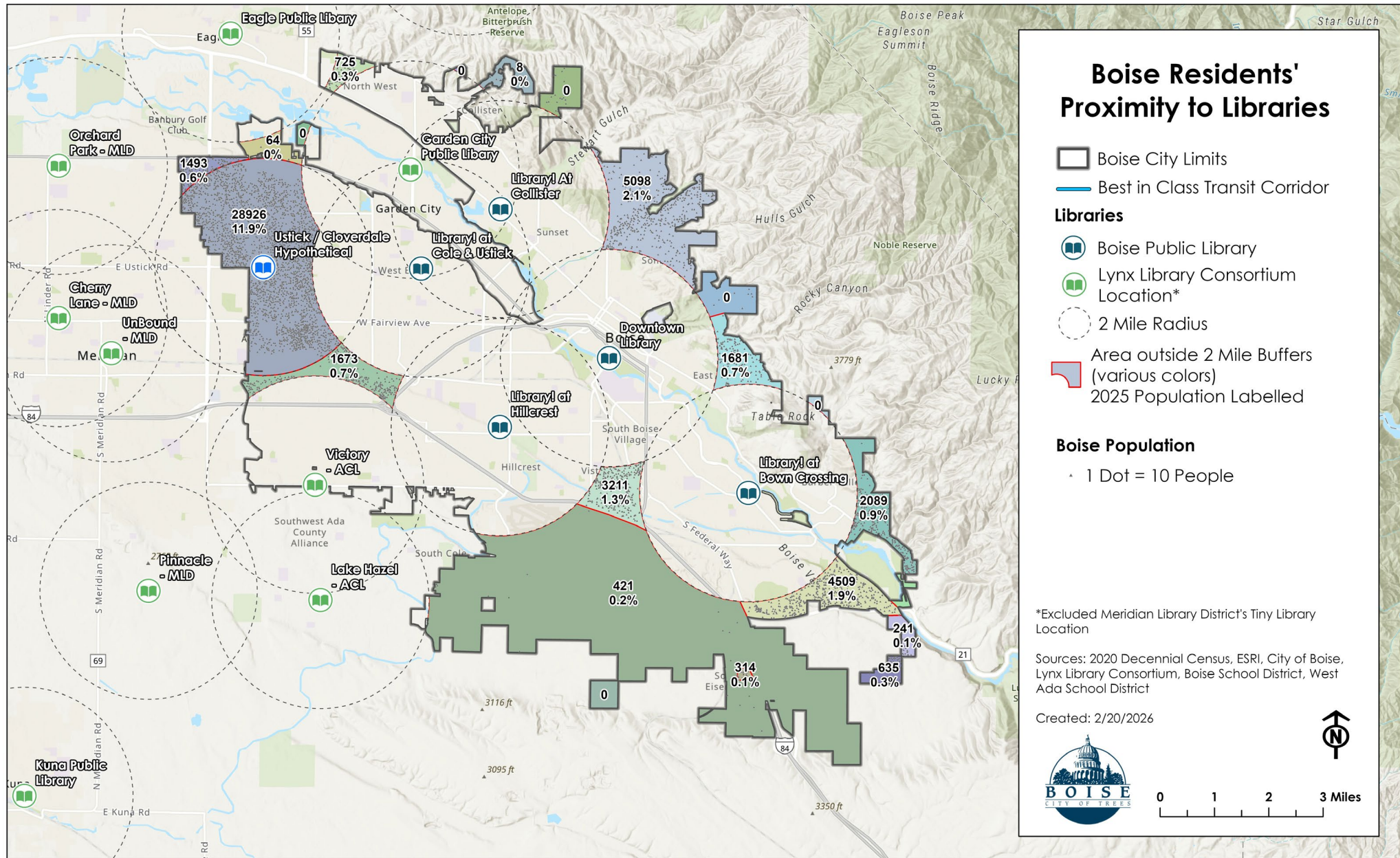
*Excluded Meridian Library District's Tiny Library Location

Sources: 2020 Decennial Census, ESRI, City of Boise, Lynx Library Consortium

Created: 2/2/2026



Three Point Unit



KEY TAKEAWAYS

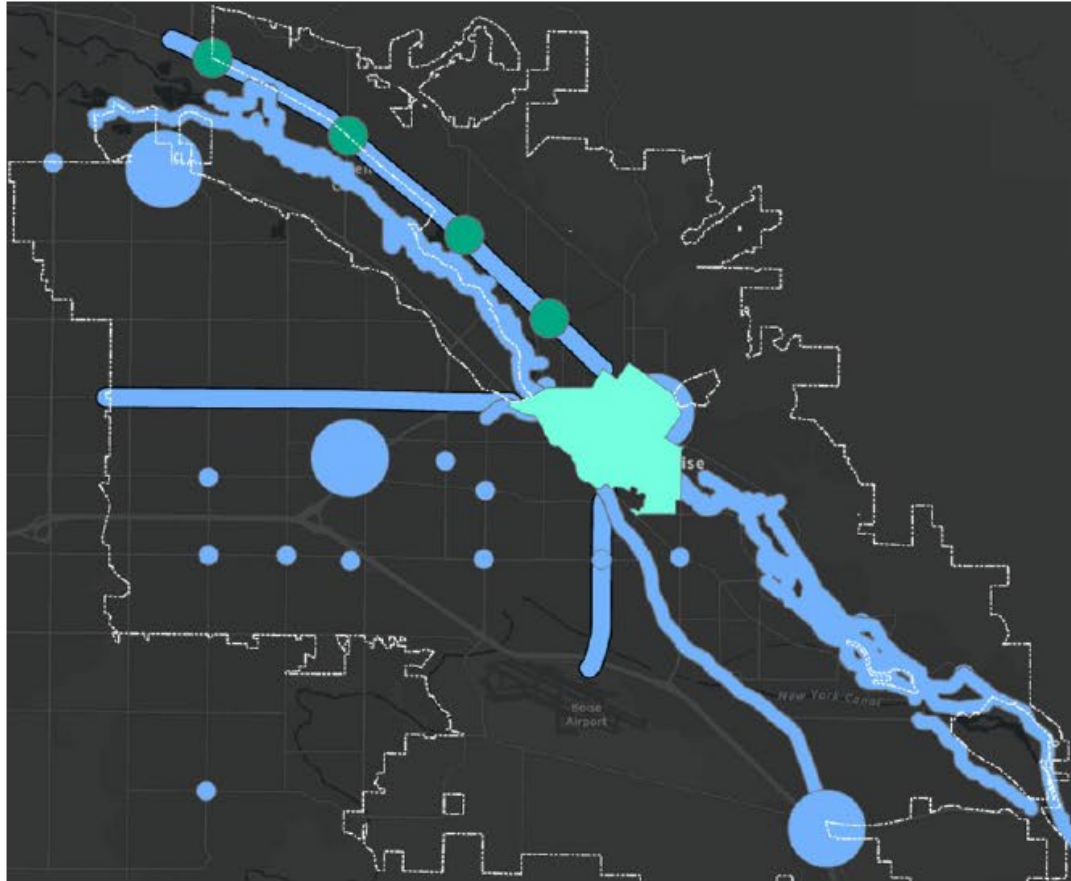
- Boise is meeting the current three-mile proximity goal and user behavior shows Boise residents access multiple libraries based on their interests or specific programs and services
- Investing in our current facilities will ensure we are able to continue to meet the expectations of our growing community
- As the city anticipates increased density, focusing on additional square footage allows us to see increased impact in a cost-effective and responsible way.

DISCUSSION

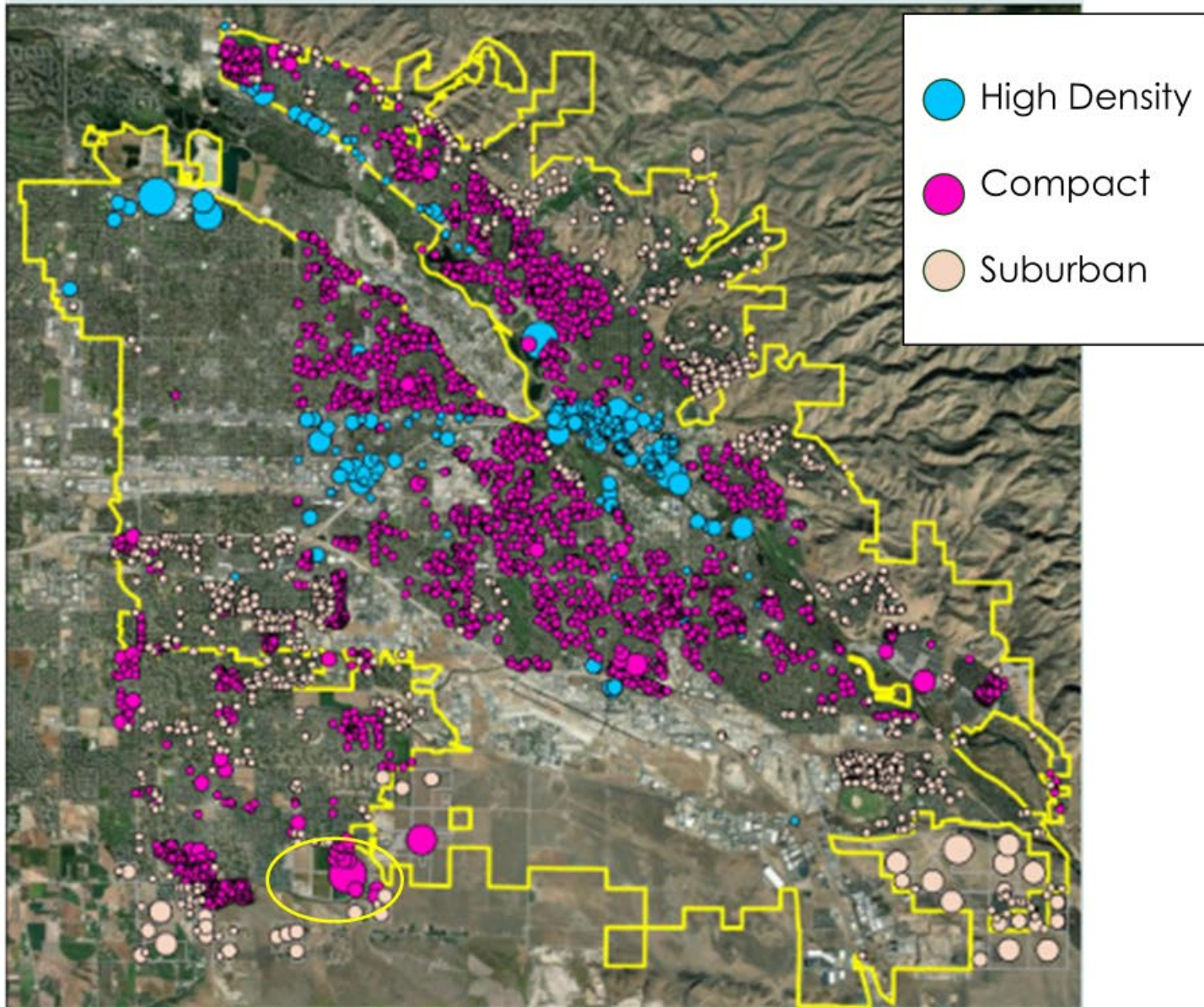
CONNECTING TO CITY PLANNING DISCUSSIONS



FOCUS DEVELOPMENT IN KEY AREAS



- Downtown Planning Area
- Best-In-Class Transit Routes (State St., Vista Ave., Fairview Ave.)
- Regional & Community Activity Centers as identified in *Blueprint Boise*
- Mixed Use Zones

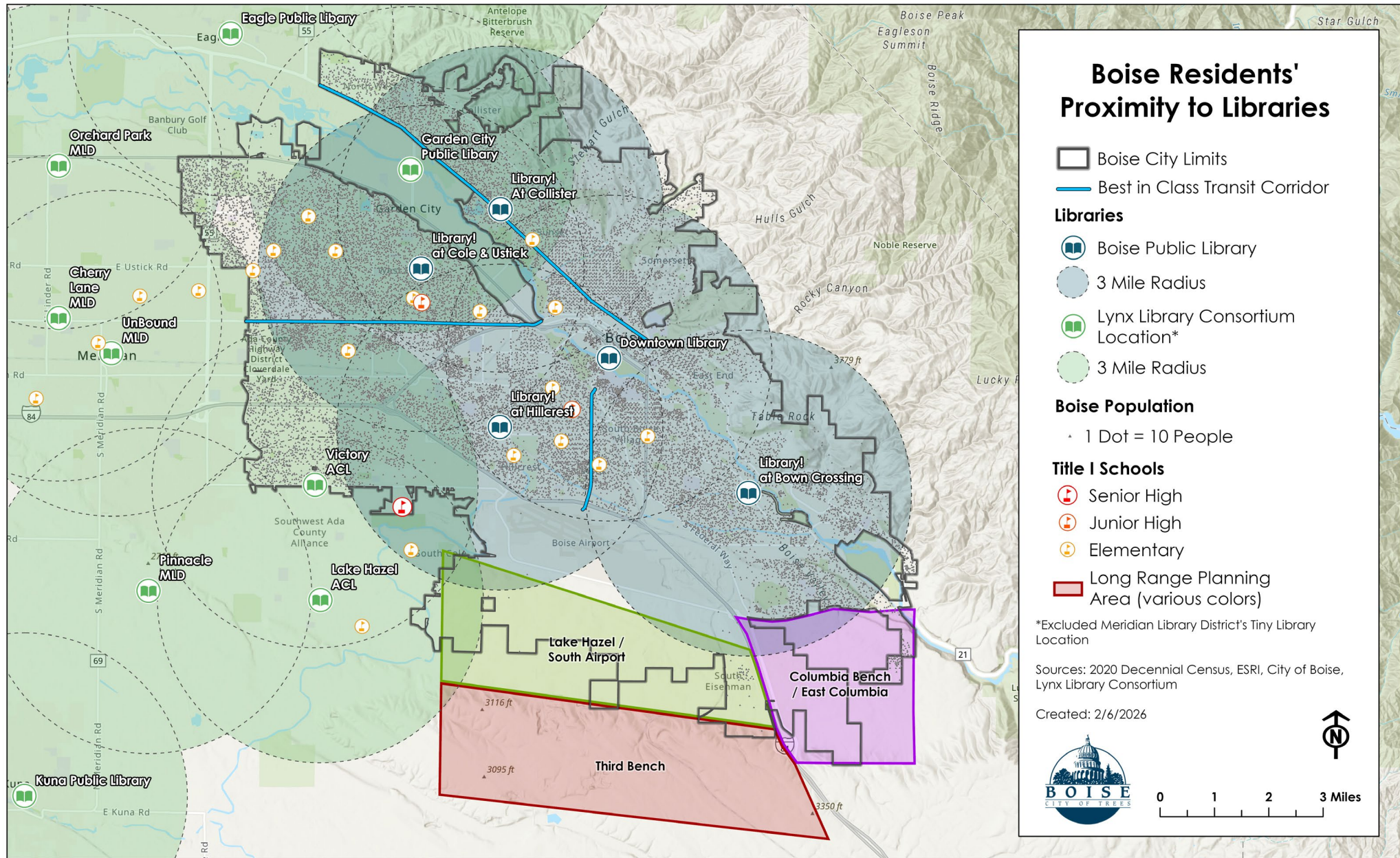


SUBAREAS

% of near-term capacity

Downtown	18%
Southwest*/ 10 Mile Creek	17%
Outer Southeast	12%
Outer West Bench	10%
Locale/Murio	9%
Inner West Bench	7%
Central Bench	7%
Northwest	7%
North End	5%
Inner Southeast	3%
Foothills	2%
Barber Valley	1%
Total Capacity	67,000 units

*Does not include recent policy decisions re: Unincorporated SW Boise



Boise Residents' Proximity to Libraries

- Boise City Limits
- Best in Class Transit Corridor

Libraries

- Boise Public Library
- 3 Mile Radius
- Lynx Library Consortium Location*
- 3 Mile Radius

Boise Population

- 1 Dot = 10 People

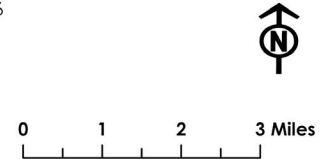
Title I Schools

- Senior High
- Junior High
- Elementary
- Long Range Planning Area (various colors)

*Excluded Meridian Library District's Tiny Library Location

Sources: 2020 Decennial Census, ESRI, City of Boise, Lynx Library Consortium

Created: 2/6/2026



DISCUSSION

THANK YOU

